

MODULAR PILOT-OPERATED CHECK VALVE



Technical Specification

Specification	02	03	04	06
Working pressure (Bar)	315			
Max. Flow (L/min)	40	100	200	360
Working fluid	Mineral oil; phosphate-ester			
Fluid temp. (°C)	-20~70			
Viscosity (mm ² /s)	2.8~500			
Opening pressure (Bar)	a: 0.50 b: 2.50 c: 4			
Cleanliness	The maximum allowable cleanliness of the oil should be according to 9th degree of Standard NAS 1638. It is suggested that the minimum filter rating should be β 10≥75.			

Model Description

WMPC - * - * / * 50 *

Modular Pilot-Operated Check Valve

Specification
 02 : DN6
 03 : DN10
 04 : DN16
 06 : DN25

A: A Pipeline
 B: B Pipeline
 W: AB Pipeline

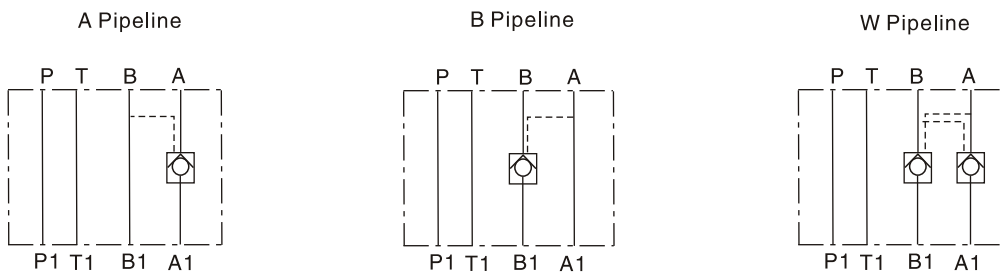
Remarks

Serial number

Seal material
 Omit : NBR Seals
 V : FPM Seals

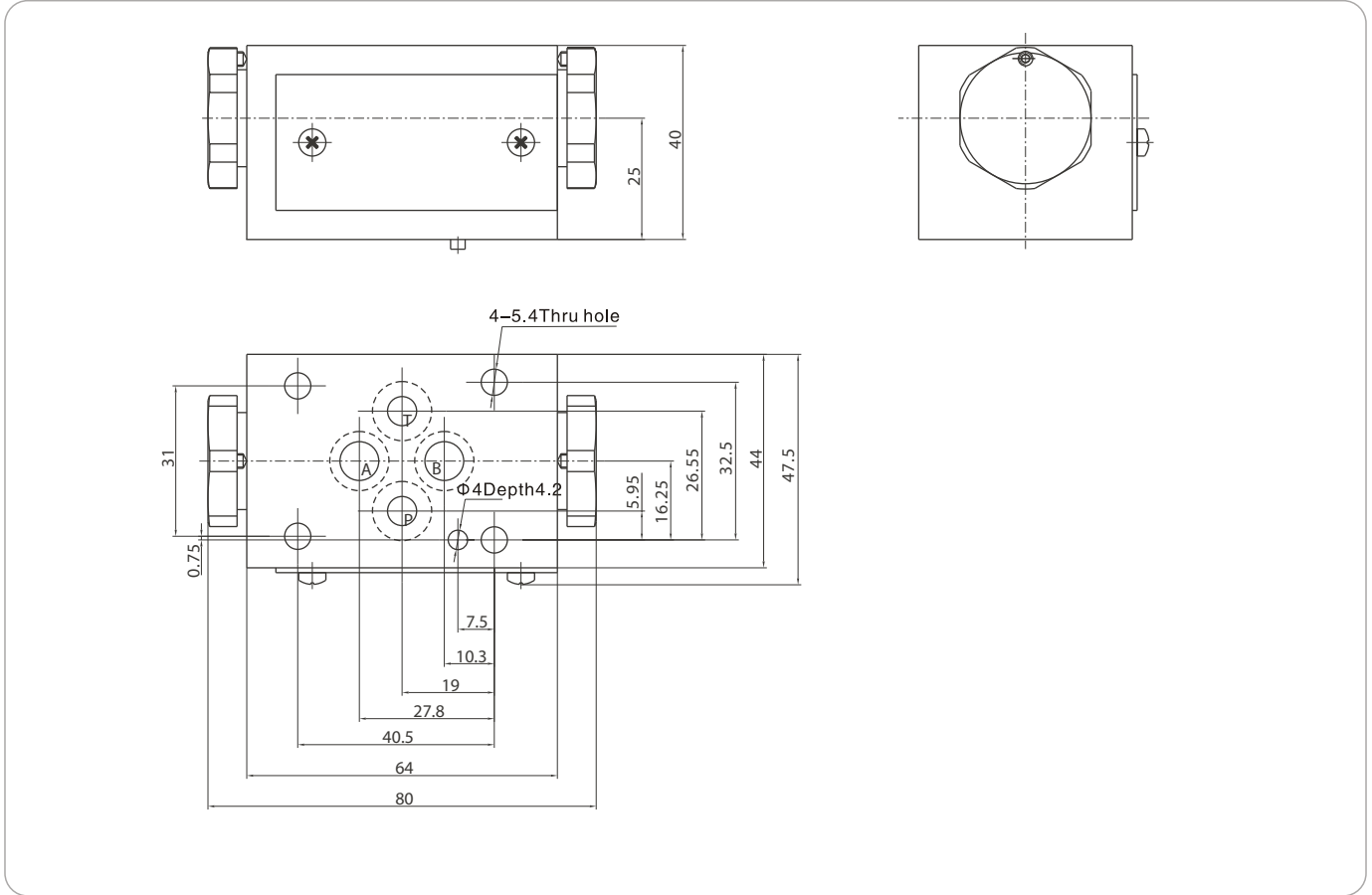
Opening Pressure
 a: 0.50
 b: 2.50
 c: 4

Code symbol

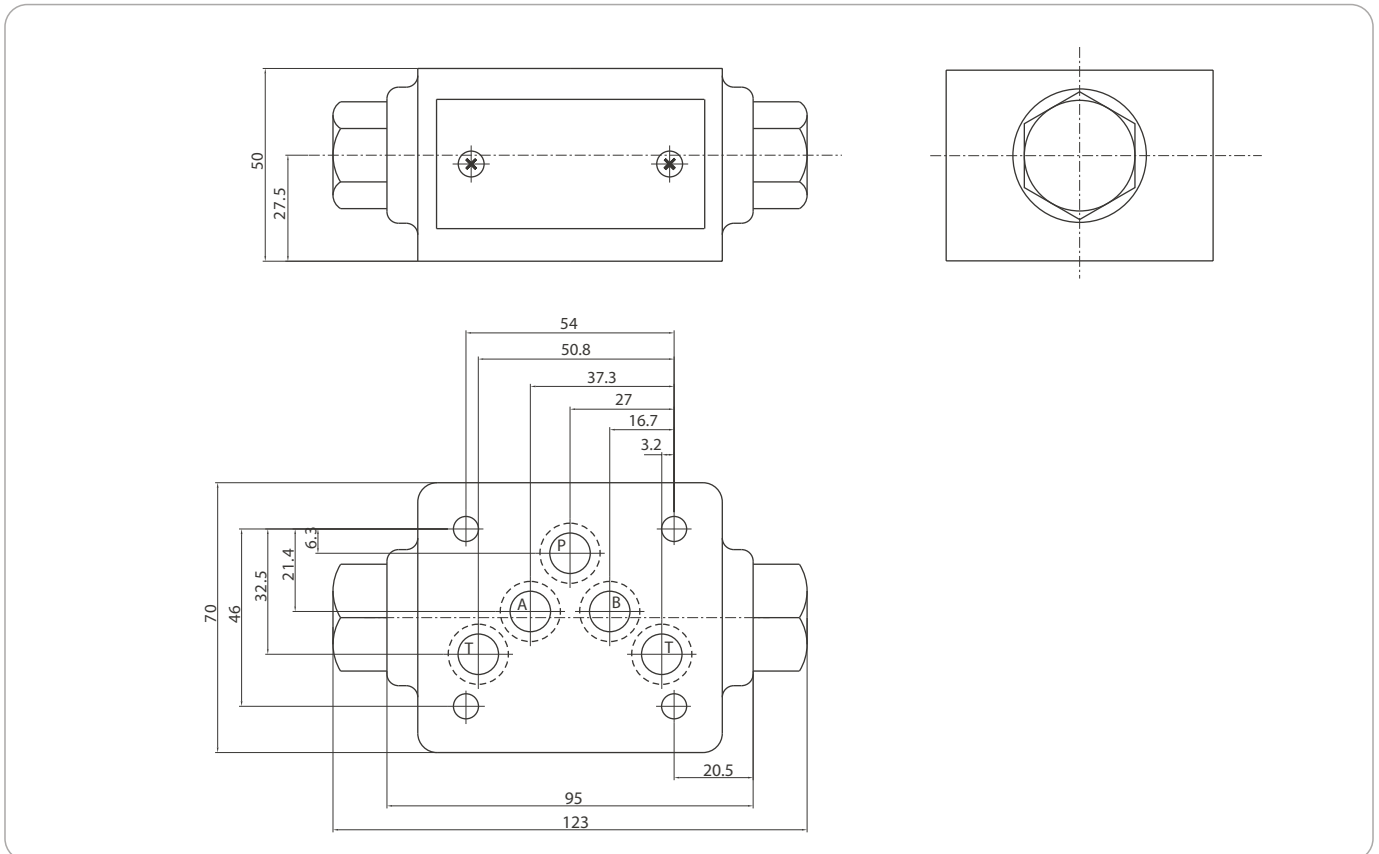


MODULAR PILOT-OPERATED CHECK VALVE

02 External dimensions

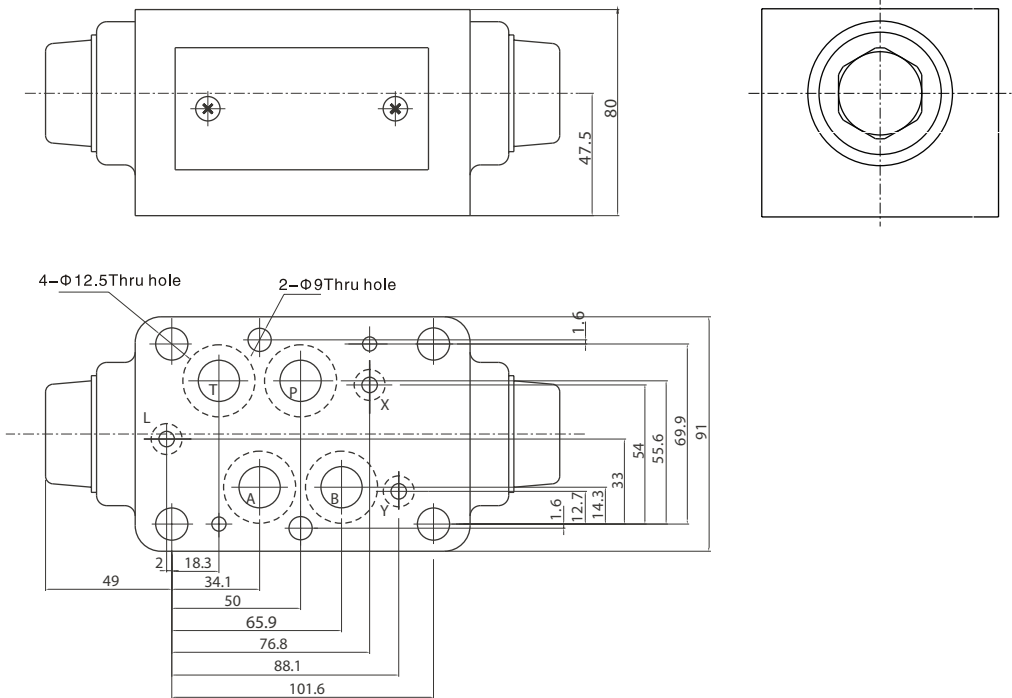


03 External dimensions



MODULAR PILOT-OPERATED CHECK VALVE

04 External dimensions



06 External dimensions

